

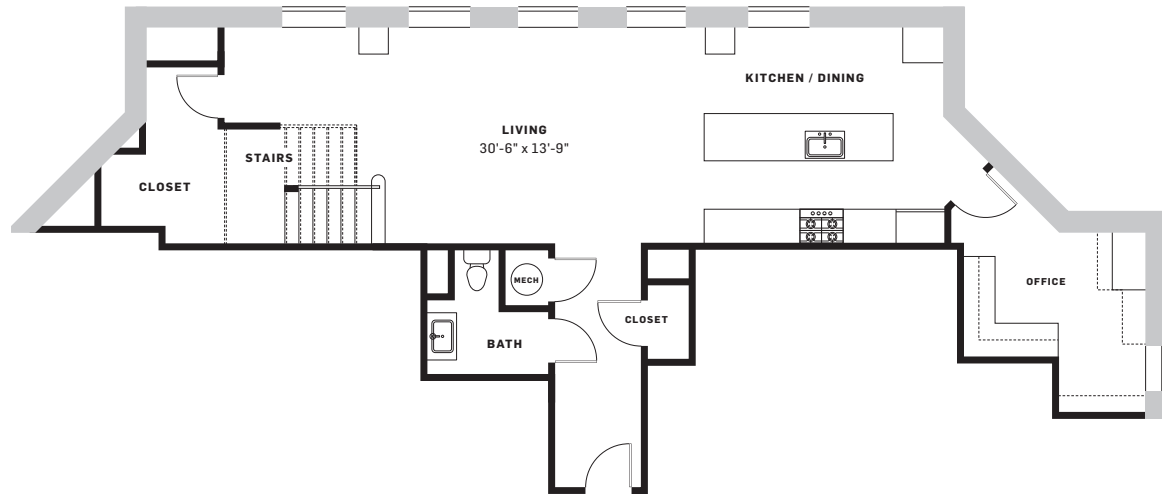
**Unit 36C**

2 BEDROOM  
OFFICE  
2.5 BATH  
2,136 SQ FT

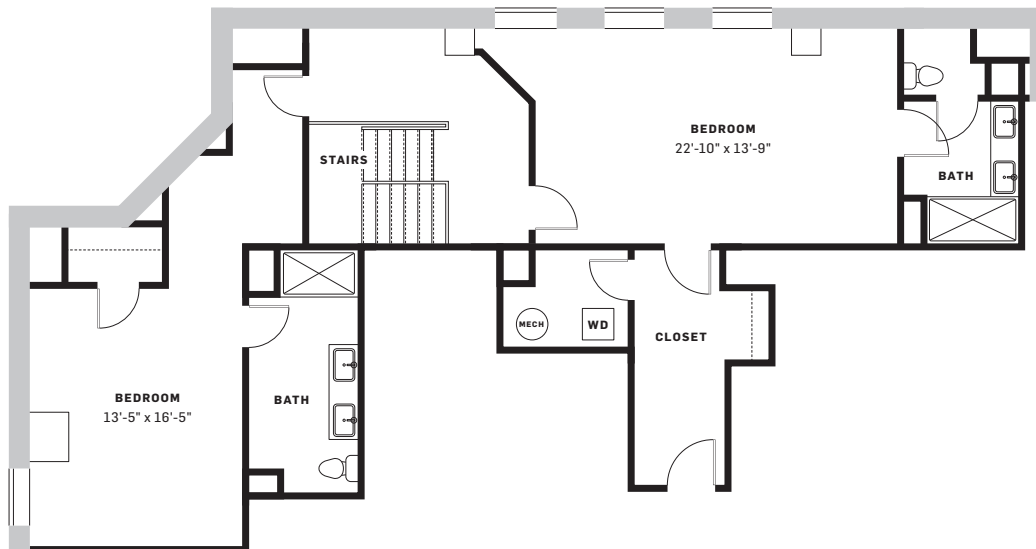


FLOOR  
36/37

LEVEL 1



LEVEL 2



## Kitchen

- 01 PENDANTS:**  
EF Chapman Easterly Large Pendant / Polished Nickel
- 02 CABINERY:**  
Echelon / Belleview Door / Maple, River Rock Paint
- 03 BACKPLASH:**  
The Tile Bar / Monarch Winter Magic
- 04 COUNTERTOP:**  
Mystery White / Pencil Edge / Polished
- 05 REFRIGERATOR:**  
Sub Zero Built-in French Door / Stainless Steel
- 06 RANGE/OVEN:**  
Wolf Duel Fuel Range / Stainless Steel
- 07 DISHWASHER:** GE Monogram
- 08 HOOD:** BROAN Elite
- 09 FAUCET:**  
Delta / Trinsic Single Handle Pull-Down chrome
- 10 MICROWAVE:** Wolf

## Living

- 11 WASHER/DRYER COMBO:**  
LG Front Loading
- 12 FLOORING:**  
Coswick Chevron / Oak / Milk Chocolate
- 13 INTERIOR DOOR HARDWARE:**  
Emtek Helios Lever / Polished Chrome
- 14 WINE COOLER**  
Edgestar / Stainless Steel / Black / 30 Bottle

## Bathroom

- 14 CABINERY:**  
Echelon / Belleview Door / Maple / Alpine White
- 15 COUNTERTOP:**  
Mystery White / Pencil edge, Polished
- 16 FLOOR TILE:**  
The Tile Bar / White Calacatta / Gold Polished Marble
- 17 SHOWER FLOOR TILE:**  
Carrara White / Herringbone / Marble Mosaic
- 18 SHOWER WALL TILE:**  
Floor and Décor / Glass Tile / Pure Shadow
- 19 VANITY LIGHTING:**  
Restoration Hardware / 20th C. Factory Filament / Milk Glass Sconce in Polished Nickel
- 20 SINK FAUCET:**  
Delta – Trinsic / Single Handle Lavatory Faucet / Chrome
- 21 SHOWERHEAD:** Hudson Reed chrome
- 22 VANITY MIRROR:** Gatco / Channel Rectangle Mirror
- 23 BATH DOOR NOB:**  
Top Knobs / Podium Pull / Polished Nickel

01



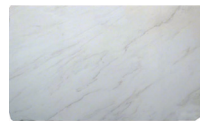
02



03



04



05



06



07



08



09



10



11



12



13



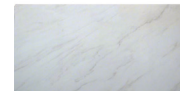
14



15



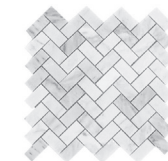
16



17



18



19



20



21



22



23



24

