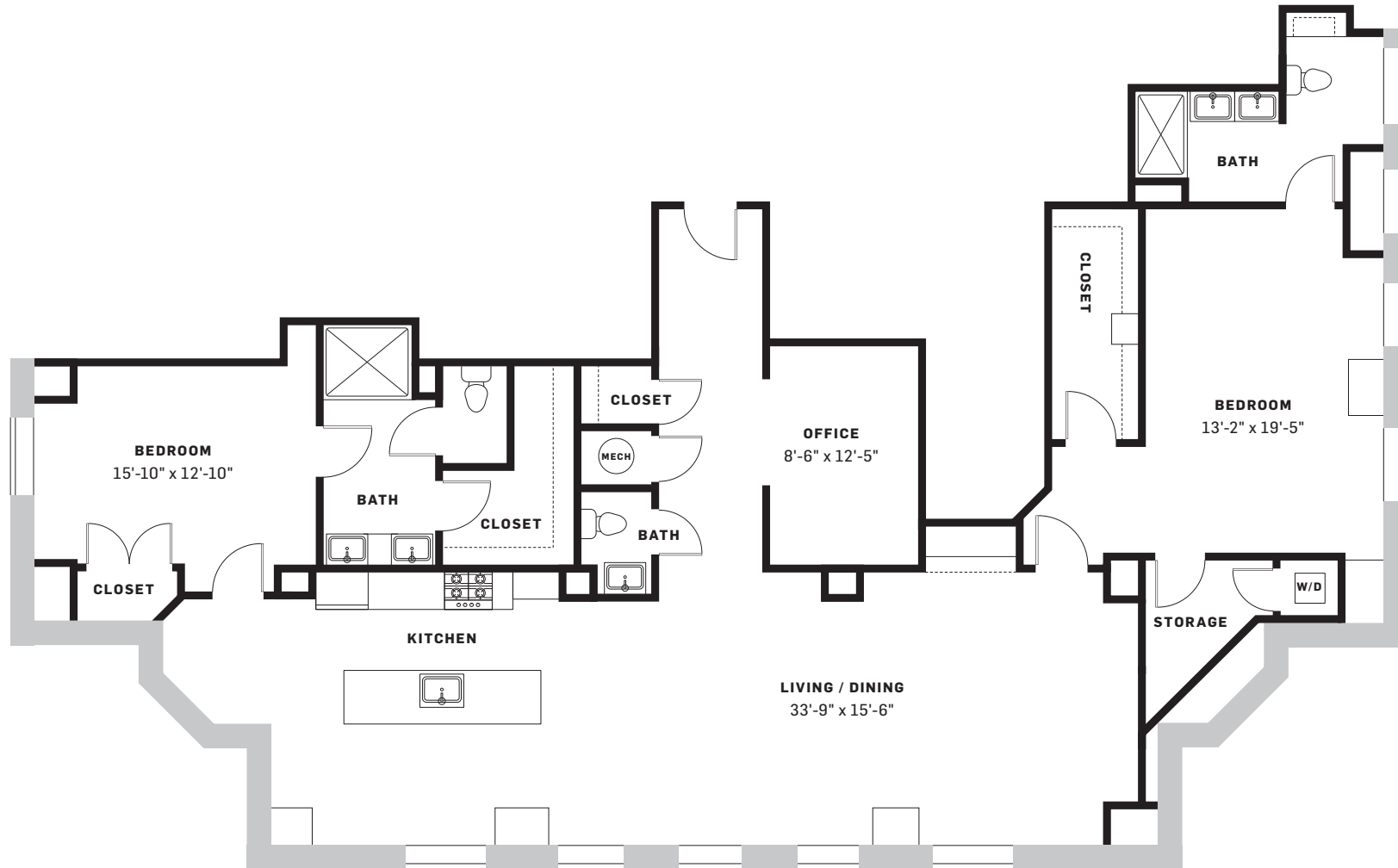
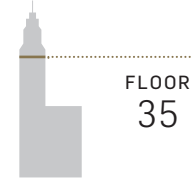


**Unit 35A**

2 BEDROOM  
2.5 BATH  
2,038 SQ FT



## Kitchen

- 01 PENDANTS:**  
EF Chapman Easterly Large Pendant / Polished Nickel
- 02 CABINETS:**  
Armstrong / Cheswick Door Flat Panel / Maple, Onyx Paint
- 03 BACKSPLASH:**  
The Tile Bar / Helix Nero Marquina / Marble & Mirror Tile
- 04 COUNTERTOP:**  
Mont Blanc Marble / Pencil Edge / Polished
- 05 REFRIGERATOR:**  
GE Monogram / French Door Stainless Steel
- 06 RANGE/OVEN:**  
GE Monogram / All Gas with 4 Burners
- 07 DISHWASHER:** GE Monogram
- 08 HOOD:** BROAN Elite
- 09 FAUCET:**  
Delta / Trinsic Single Handle Pull-Down chrome
- 10 MICROWAVE:** GE Monogram

## Living

- 11 WASHER/DRYER COMBO:**  
LG Front Loading
- 12 SWING AND SLIDING DOORS HARDWARE:**  
Emtek Helios Lever / Square Rose in Flat Black
- 13 WINE COOLER**  
Edgestar / Stainless Steel / Black/ 30 Bottle

## Bathroom

- 14 CABINETS:**  
Armstrong / Cheswick Door Flat Panel / Maple, Onyx Paint
- 15 COUNTERTOP:**  
Black Wave Marble / Pencil Edge / Polished
- 16 BATHROOM & SHOWER FLOOR TILE:**  
Classico Tile / Black marble honed / Hexagonal tile
- 17 SHOWER WALL TILE:**  
The Tile Bar / White Carrara 3x6 Beveled
- 18 VANITY LIGHTING:**  
Restoration Hardware / Petite Candlestick Sconce / Polished Nickel
- 19 SINK FAUCET:**  
Delta – Trinsic / Single Handle Lavatory Faucet / Chrome
- 20 SHOWERHEAD:**  
Delta – Trinsic chrome
- 21 VANITY MIRROR:**  
Gatco / Channel Rectangle Mirror

